



MAMMALS HONOUR



Rangers
By Meshele

2. LIST 4 CHARACTERISTICS OF A MAMMAL?

1. Endothermic (warm blooded)
2. Hair/fur
3. Mammary (milk producing) glands
4. Heterodont dentition (different shapes of teeth in their mouth)

3. GIVE ONE OR MORE IDENTIFYING CHARACTERISTICS OF EACH OF THE FOLLOWING ORDERS OF MAMMALS AND NAME ONE OR MORE SPECIES OF MAMMALS FOUND IN EACH ORDER

MARSUPIALIA

- Have pouches that protect the young as they develop
- Infants are born very early stages of development
- They crawl out the womb to the mother belly to find the nipple to attach to; continues to grow
- Eg kangaroos, koalas, wombats, opossum



INSECTIVORA (INSECT EATER)

- Eat insects
- Excellent sense of smell (snouts)
- Smooth fur or spines
- Five clawed fingers
- Tiny ears
- Eg hedgehogs, shrew, tenrec

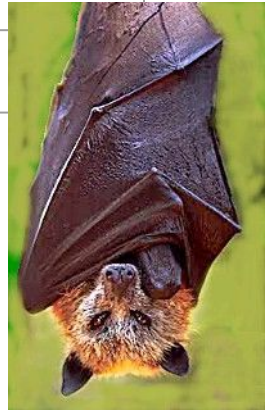


CHIROPTERA

- Flying mammals
- There are two types: megabats & microbats

Megabats	Microbats
Eat fruits, pollen or nectar	Eat insects, blood, small mammals
Do not use echolocation	They use animal echolocation
	Lack underfur, only have guard hair

- Eg bats



CARNIVORA

- Meat eaters
- They have canine teeth that are adapted for this behaviour
- Good eye sight & sense of smell
- Well developed brain to help with hunting ability
- Hunt for prey
- Eg tiger, hyena, wolves, walrus, sea lions, racoons

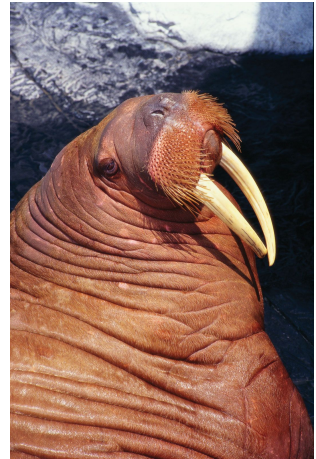


PINNIPEDIA

- An order of carnivorous aquatic mammals
- flipper -like limbs
- Spindle-shaped bodies
- Organs are adapted to function in both air and water
- Larger whiskers
- Small ears and larger eyes
- Eg sea lions, seals



shutterstock.com • 1642312396



RODENTIA

- Two incisors in upper and lower jaws which grow continuously and must be kept down by gnawing
- Latin rodere means to gnaw
- The teeth are used for cutting wood, biting through skin of fruit or for defense
- They lack canines
- Feed on plants, seeds and a few eat insects or fish
- Eg beaver, rats, squirrels



LAGOMORPHA

- They have 4 incisors in the upper jaw
- Only eat vegetation
- They will redigest first-time droppings to obtain the most from their plant diet
- Their teeth grow throughout their life therefore they constantly chew to keep them from growing too long
- Eg rabbits, hares, pika



ARTIODACTYLA

- Mammals with hooves
- Bear most of their weight on an even number of toes
- Eg hog, camel, hippopotamus, giraffe, deers, antelope, sheep



SIRENIA

- Slow moving herbivores
- Eg dugongs, manatee



CETACEA

- Means large sea animal
- Aquatic
- Massive
- Incapable of walking on land
- Eg whales



4. LIST 4 BENEFICIAL MAMMALS AND TELL HOW THEY ARE BENEFICIAL

1. Dogs - provide assistance to the blind and comfort the sick
2. Hyenas - they keep the environment clean and free from diseases as they are scavengers
3. Wolves - elks are afraid of them, which means the willows could grow instead of being eaten by the elks
4. Meerkats - they eat scorpions and snakes



5. LIST 4 THINGS MAMMALS DO THAT ARE HARMFUL

1. Tigers, bears, wolves have killed and sometimes eaten people (they prey on livestock)
2. Skunks can make a neighbourhood smell bad
3. Rats can carry diseases
4. Beavers can back up streams and flood areas as well as cut down trees
5. Deers can cause terrible car accidents

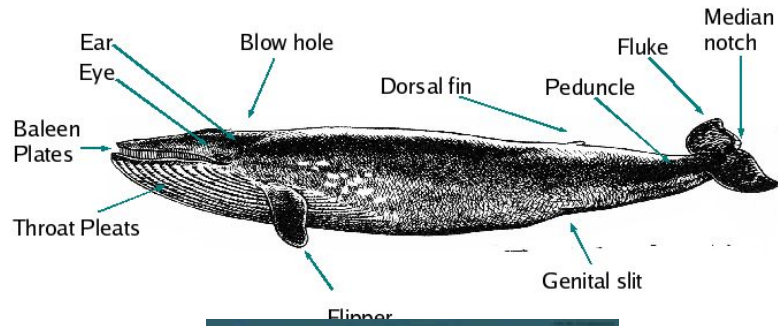


6. LIST 4 MAMMALS THAT ARE COMPLETELY AQUATIC AND DESIGNATE THEIR NATURAL RANGE

1. Whales - live near the surface of the ocean
2. Dolphins - live in warm temperate seas and oceans all over the world
3. Freshwater mammals - live in the Amazon River
4. Porpoise - live in the shallow coastal waters of Asia especially India, China, Indonesia and Japan



7. NAME THE LARGEST MAMMAL IN THE WORLD AND TELL WHERE IT LIVES, HOW IT FEEDS AND WHAT IT EATS.



BALAENOPTERA MUSCULUS (BLUE WHALE)

- Length: 30m
- Mass: 50,000 – 150,000 kg (Adult)
- Life-span: 80-90 years
- They've been seen in every ocean in the world
- A blue whale's tongue can weigh as much as an elephant
- The loudest animal that can produce sounds that can be heard 1000 miles away

<https://www.youtube.com/watch?v=bgiPTUy2RqI>

HOW DOES IT FEED & WHAT DOES IT EAT?

- They feed by filtering the water through the giant baleen plates in their mouth
- They can eat up to 4 tons of krill and copepods and each day drink up to 400 litres a day



8. LIST 8 SPECIES OF WILD MAMMALS THAT ARE IN YOUR REGION. SPEND AT LEAST 5 HOURS SEARCHING FOR WILD ANIMALS IN THEIR NATURAL HABITAT

9. WRITE OR TELL A STORY ABOUT 'WILD MAMMALS I HAVE OBSERVED'